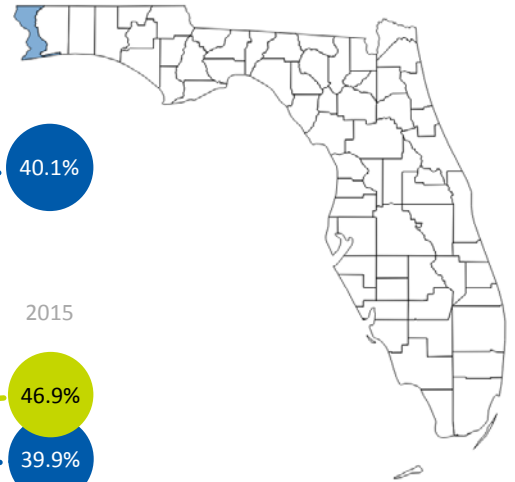


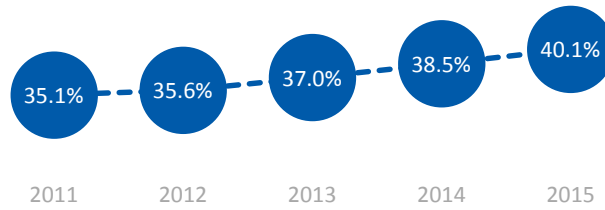
# DEGREE ATTAINMENT PROFILE

## Escambia County

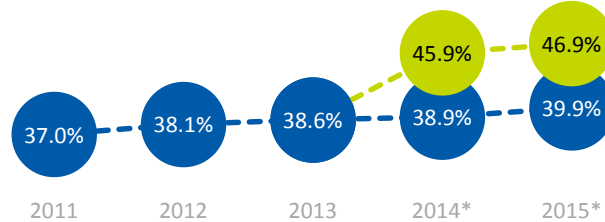
Residents with a high-quality degree or credential<sup>1</sup>



**ESCAMBIA**  
**40.1%** ↑5.0% since 2011  
 ranks 14<sup>th</sup> among all counties in Florida.



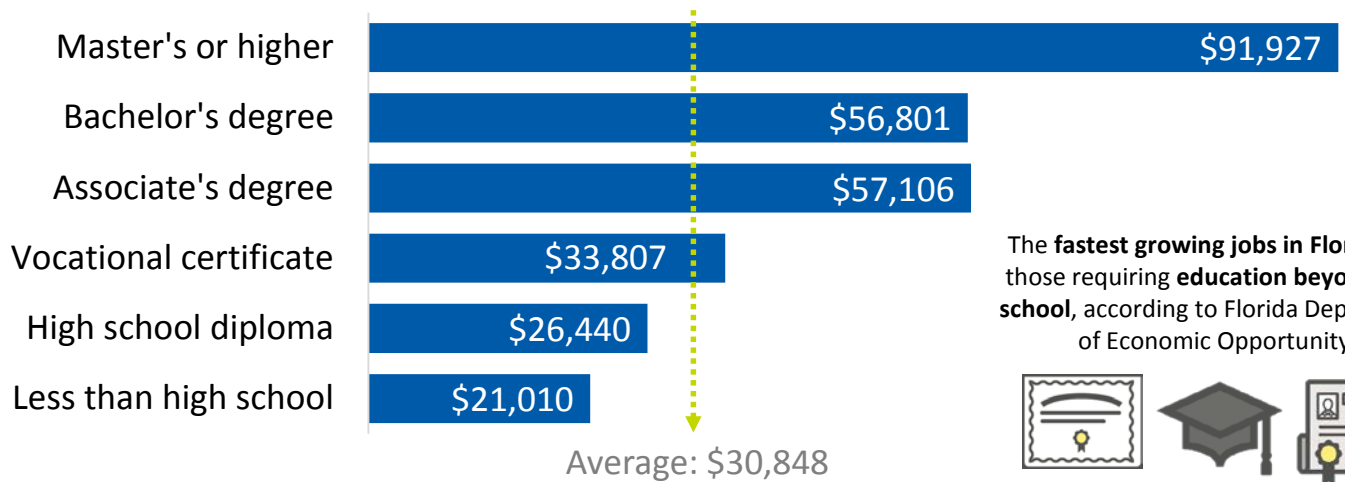
**FLORIDA**  
**46.9%** ↑9.9% since 2011  
 ranks 21<sup>st</sup> among all states in the U.S.



■ 2-year degree or higher    ■ Includes workforce-relevant certificates

\*An estimated 7% of Florida residents and 4.9% of U.S. residents hold a workforce-relevant certificate, according to Lumina Foundation. This data is not yet available at the county level.

## Average wages for local workers by education/training level<sup>2</sup>



The fastest growing jobs in Florida are those requiring **education beyond high school**, according to Florida Department of Economic Opportunity.



## Local College Access Networks



Local College Access Networks (LCANs) are place-based strategic alliances supported by local leaders who develop a postsecondary attainment goal for their regions and develop a common agenda to achieve their goal. Florida College Access Network is pleased to support communities interested in developing an LCAN.

For more information, contact Kathy McDonald at [kmcdonald@FloridaCollegeAccess.org](mailto:kmcdonald@FloridaCollegeAccess.org)

### Want more data?

Visit [floridacollegeaccess.org/research-and-data](http://floridacollegeaccess.org/research-and-data) for data dashboards, interactive maps, and tables with state and local college access and success data.

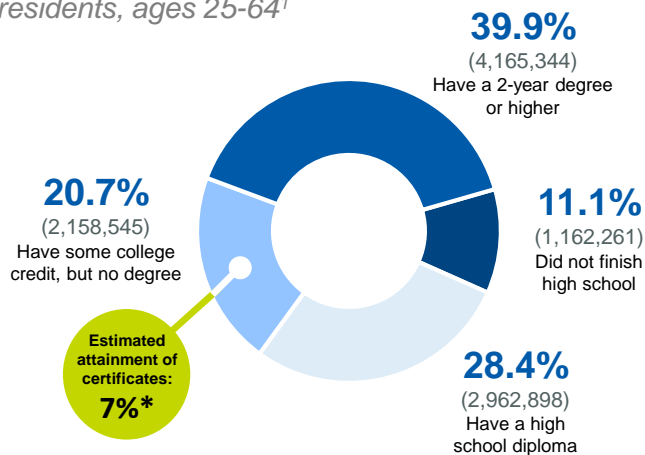
The Florida College Access Network's mission is to create and strengthen a statewide network that catalyzes and supports communities to improve college & career preparation, access, and completion for all students. For more information, visit [www.floridacollegeaccess.org](http://www.floridacollegeaccess.org).



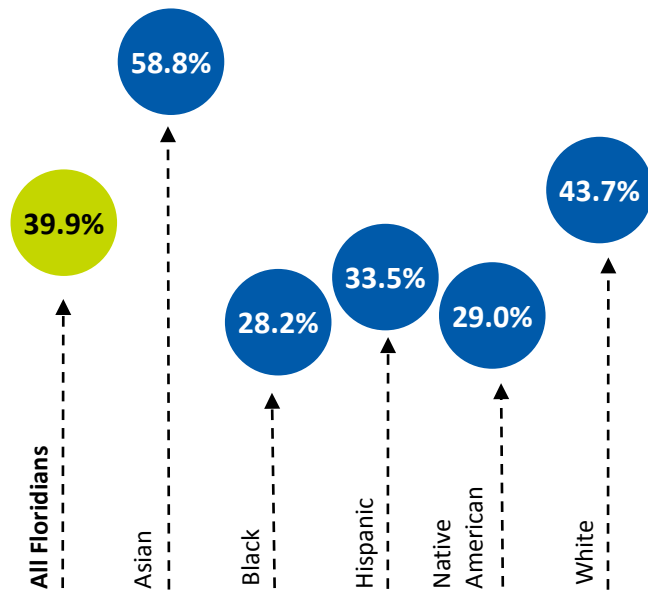
# DEGREE ATTAINMENT PROFILE

## State of Florida

Highest level of education among Florida residents, ages 25-64<sup>1</sup>



\*State-level estimates of high-quality certificates were provided for the first time in the 2016 Stronger Nation report published by Lumina Foundation. While groups are working on providing estimates for certificates and other credentials (i.e. certifications, licenses) at the county/regional level, this data is not yet available.



Florida's degree attainment by race/ethnicity group<sup>2</sup>

## Degree attainment by county & age group<sup>3</sup>

County	25 to 34	25 to 64	County	25 to 34	25 to 64	County	25 to 34	25 to 64
Alachua	60.2%	54.1%	Hardee	10.5%	12.8%	Okeechobee	14.7%	17.2%
Baker	18.4%	19.0%	Hendry	12.7%	15.7%	Orange	46.1%	43.7%
Bay	34.2%	34.9%	Hernando	28.1%	28.4%	Osceola	29.4%	29.6%
Bradford	20.7%	19.7%	Highlands	18.1%	25.9%	Palm Beach	39.6%	43.2%
Brevard	40.3%	41.8%	Hillsborough	43.3%	42.5%	Pasco	38.4%	36.2%
Broward	43.9%	43.2%	Holmes	15.6%	17.8%	Pinellas	41.7%	41.5%
Calhoun	18.6%	15.6%	Indian River	29.2%	36.2%	Polk	27.8%	28.6%
Charlotte	25.1%	29.7%	Jackson	17.7%	20.6%	Putnam	20.2%	19.1%
Citrus	21.1%	25.2%	Jefferson	14.5%	27.4%	Santa Rosa	39.1%	40.6%
Clay	35.3%	36.3%	Lafayette	13.6%	18.5%	Sarasota	34.2%	39.7%
Collier	33.8%	37.8%	Lake	33.0%	32.4%	Seminole	50.7%	50.5%
Columbia	22.4%	25.4%	Lee	30.4%	33.9%	St. Johns	46.7%	52.4%
DeSoto	8.0%	12.2%	Leon	58.6%	55.7%	St. Lucie	25.9%	31.0%
Dixie	8.0%	13.8%	Levy	18.5%	18.3%	Sumter	12.6%	30.8%
Duval	40.8%	38.5%	Liberty	15.7%	15.5%	Suwannee	14.6%	17.6%
Escambia	40.8%	40.1%	Madison	25.4%	19.9%	Taylor	13.6%	16.4%
Flagler	36.6%	32.1%	Manatee	31.4%	36.8%	Union	12.9%	15.5%
Franklin	6.8%	18.1%	Marion	24.0%	27.8%	Volusia	33.5%	32.8%
Gadsden	18.8%	23.7%	Martin	37.2%	42.9%	Wakulla	24.1%	26.4%
Gilchrist	18.9%	24.5%	Miami-Dade	42.0%	38.8%	Walton	30.5%	33.3%
Glades	9.9%	17.4%	Monroe	37.9%	39.5%	Washington	7.1%	16.1%
Gulf	17.7%	22.5%	Nassau	29.3%	30.5%	Florida	40.7%	39.9%
Hamilton	11.8%	16.6%	Okaloosa	38.2%	40.3%	United States	42.9%	40.9%

### DATA NOTES

**Front Page 1.** County: All rates for residents aged 25-64 and does not include industry certifications; U.S. Census Bureau, 2015 American Community Survey 5-year estimate. Florida: High-quality degrees and credentials include postsecondary certificates (after 2014) and associate's degree or higher for residents aged 25-64; U.S. Census Bureau, American Community Survey 1-year estimate and Lumina Foundation Stronger Nation Report. 2. Median Earnings: data are for Florida Workforce Region 1 (2016); Florida Department of Economic Opportunity. **Back Page:** All data are for Florida residents ages 25 to 64 unless otherwise labeled. 1. Education by attainment level: Census Bureau, 2015 American Community Survey 1-year estimate, Lumina Foundation *Stronger Nation* report for certificate estimates, which reflects certificate holders working in the field which the certificate was awarded. 2. Degree attainment by race/ethnicity: U.S. Census Bureau, 2013-15 American Community Survey PUMS file. 3. Degree attainment by county and age: U.S. Census Bureau, 2015 American Community Survey 5-year estimates.

The Florida College Access Network's mission is to create and strengthen a statewide network that catalyzes and supports communities to improve college & career preparation, access, and completion for all students. For more information, visit [www.floridacollegeaccess.org](http://www.floridacollegeaccess.org).